

OPERATIONS

TRI-COMMUNITY SOUTH EMS FUND EMERGENCY MEDICAL SERVICE



	<u>2006 Actual</u>	<u>2007 Actual</u>	<u>2008 Budget</u>	<u>2008 Estimate</u>	<u>2009 Budget</u>
Beginning Fund Balance	\$ (229,116)	\$ (229,116)	\$ (122,611)	\$ (122,611)	\$ 100,000
Estimated Revenue	2,781,934	2,830,573	2,833,000	2,889,500	2,852,000
Appropriations	<u>(2,781,934)</u>	<u>(2,724,068)</u>	<u>(2,833,000)</u>	<u>(2,666,889)</u>	<u>(2,852,000)</u>
Ending Fund Balance	<u>\$ (229,116)</u>	<u>\$ (122,611)</u>	<u>\$ (122,611)</u>	<u>\$ 100,000</u>	<u>\$ 100,000</u>

TRI-COMMUNITY SOUTH EMS OVERVIEW

The Tri Community South Emergency Medical Services (TCS EMS) Fund is a fund jointly operated by the Township of Upper St. Clair, South Park Township and the Municipality of Bethel Park. This fund pays all expenses related to the ambulance program. TCS EMS revenue consists of annual subscriptions, non-subscriber and subscriber medical charges, third party billings and non-emergency transport fees. Under the third party Agreement governing the program, the Township of Upper St. Clair acts as the system's treasurer and manages the funds' activities in the same manner in which it treats its own funds.

The Department of Health is the lead agency for emergency medical services in the Commonwealth of Pennsylvania. The Department's Bureau of Emergency Medical Services (BEMS) is responsible for the statewide development and coordination of a comprehensive system to prevent and reduce premature death and disability.

Pennsylvania's Emergency Medical Services system is defined by the EMS Act of 1985 (Act 45) Pa C.S. §6921-6938, regulations updated published October 14, 2000. Tri Community South EMS falls under the Emergency Medical Services Institute (EMSI), one of 16 regional EMS Councils in the Commonwealth of Pennsylvania.

Tri-Community South Emergency Medical Services operates 24-hours per day, seven days per week in providing emergency medical care to the residents of Bethel Park, South Park and Upper St. Clair. In addition, TCS EMS provides mutual aid to areas surrounding these three communities. To provide these services, TCS EMS maintains a fleet of six (6) ambulances containing state-of-the-art medical equipment used by Paramedics and EMT's to provide patient care and if necessary transport to area hospitals and specialty hospitals.

DEPARTMENT STATISTICS AND BENCHMARKS

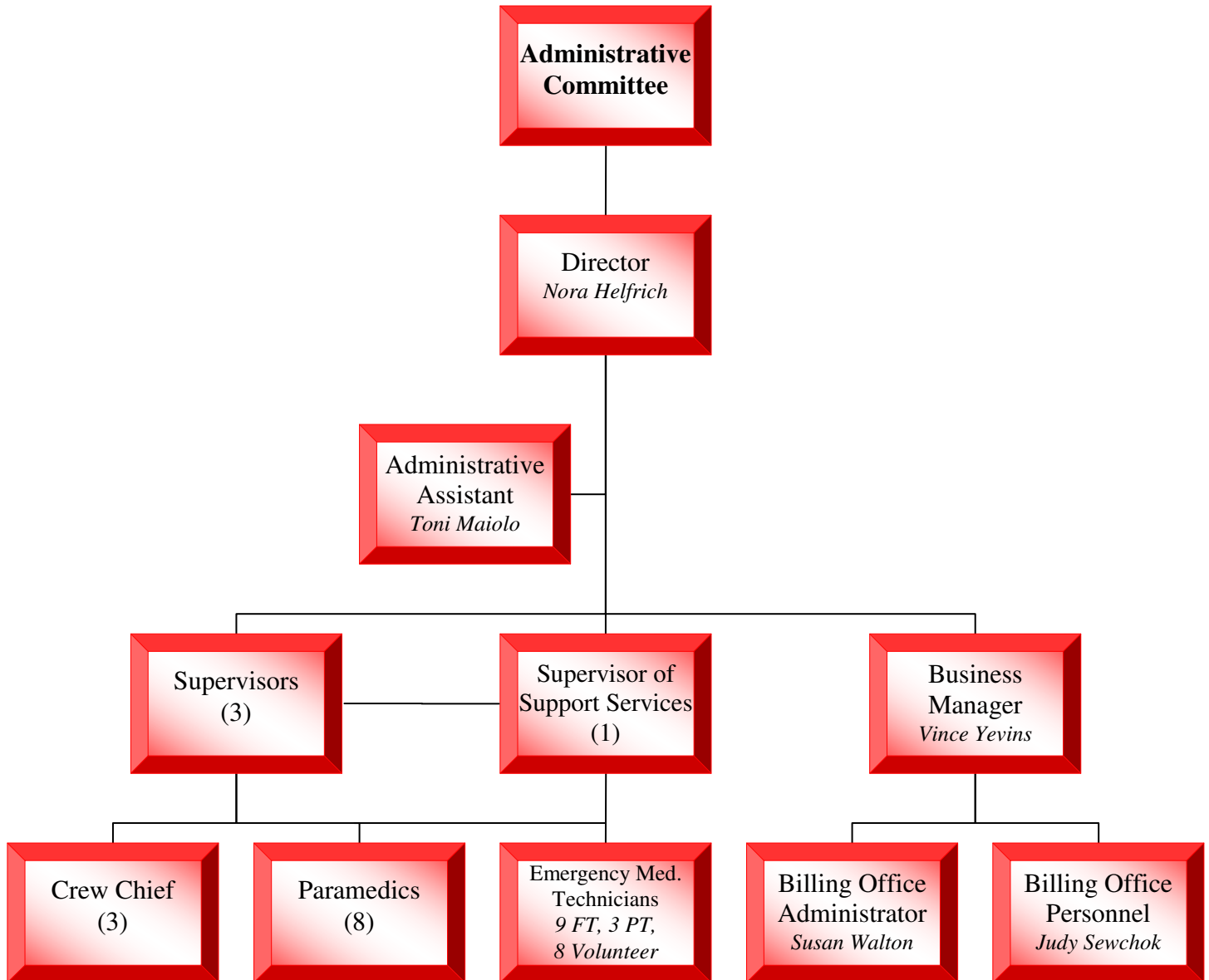
The number of calls for service and transports provided by the system for the past several years is summarized below:

Category	2003	2004	2005	2006	2007	November-08
Calls for Service	5,717	5,902	5,935	6,123	6,678	6,120
Transports	4,145	4,373	4,467	4,619	5,163	4,749
Advanced Life Support	3,190	3,451	3,574	3,673	4,000	3,639
Basic Life Support	955	922	893	946	1,163	1,110
Non-Emergency Transports	413	300	244	200	224	142



DEPARTMENT ORGANIZATIONAL STRUCTURE

The Tri-Community South Emergency Medical Services is staffed by a Director, Business Manager, one (1) full-time Administrative Assistant, one (1) full-time Billing Supervisor, one (1) full-time Billing Clerk, four (4) Paramedic Supervisors, three (3) Paramedic Crew Chiefs, and eight (8) full-time Paramedics, nine (9) full-time Emergency Medical Technicians and three (3) part-time Emergency Paramedics and (8) Volunteer Emergency Medical Technicians.



OPERATIONS

TRI-COMMUNITY SOUTH EMS FUND EMERGENCY MEDICAL SERVICE



PROGRAM REVENUE

	<u>2006</u> Actual	<u>2007</u> Actual	<u>2008</u> Budget	<u>2008</u> Estimate	<u>2009</u> Budget
Estimated Revenue					
90-00-000-??????-000					
320400 Subscriptions	\$ 433,284	\$ 467,562	\$ 456,000	\$ 440,000	\$ 455,000
355710 Non-Subscriber Billings	1,304,785	1,329,871	1,345,000	1,365,000	1,355,000
356720 Subscriber Billings	826,442	807,201	812,000	848,000	825,000
360013 PA State Pension Grant	52,847	60,821	57,000	57,000	62,000
367006 CPR Program Fees	45,324	47,691	45,000	70,000	65,000
367021 NETS Revenue	67,768	72,515	70,000	62,000	45,000
367072 Outside Details	26,814	19,442	25,000	22,500	23,000
380890 Donations	18,531	19,215	18,000	19,000	16,000
380999 Miscellaneous Revenue	6,139	6,255	5,000	6,000	6,000
Total Revenue	\$ 2,781,934	\$ 2,830,573	\$ 2,833,000	\$ 2,889,500	\$ 2,852,000

PROGRAM EXPENDITURES

	<u>2006</u> Actual	<u>2007</u> Actual	<u>2008</u> Budget	<u>2008</u> Estimate	<u>2009</u> Budget
Appropriations					
90-20-204-500???-000					
Personal Services					
101 Full-Time Wages	\$ 1,179,322	\$ 1,241,944	\$ 1,335,000	\$ 1,302,000	\$ 1,369,405
110 Overtime Wages	53,734	57,439	61,000	59,000	62,000
120 Part-Time Wages	65,622	59,563	75,000	40,000	35,000
153 Holiday Pay	39,475	41,935	42,000	43,000	44,500
161 Continuing Education	16,933	9,138	15,000	10,000	10,000
162 Group Life Insurance	8,485	8,500	8,800	10,420	10,798
163 Medical Insurance	297,464	293,262	354,350	356,425	387,049
164 Workmen's Comp	82,424	91,393	82,000	80,000	85,000
165 Unemployment Comp	-	1,631	2,000	1,000	2,000
166 Pension Costs	60,179	66,219	68,775	69,000	71,670
167 Longterm Disability Ins	4,360	4,495	4,700	3,947	6,810
172 Outside Details	14,344	14,242	18,500	14,500	16,000
198 Social Security Expense	106,700	108,817	118,310	113,258	118,529
Total Personal Services	\$ 1,929,042	\$ 1,998,578	\$ 2,185,435	\$ 2,102,550	\$ 2,218,761

OPERATIONS

TRI-COMMUNITY SOUTH EMS FUND
EMERGENCY MEDICAL SERVICE



PROGRAM EXPENDITURES (Continued)

	<u>2006</u> <u>Actual</u>	<u>2007</u> <u>Actual</u>	<u>2008</u> <u>Budget</u>	<u>2008</u> <u>Estimate</u>	<u>2009</u> <u>Budget</u>
Contractual Services					
210 Legal Services	\$ 1,535	\$ 13,892	\$ 2,000	\$ 7,000	\$ 10,000
220 Liability Ins-E & O	28,790	39,337	30,000	39,696	41,000
222 Vehicle Insurance	21,579	21,439	26,000	19,212	26,000
232 Conference & Training Expense	4,916	3,355	5,000	7,500	8,000
240 Utilities-Water & Sewer	3,388	3,939	4,500	3,500	4,500
241 Utilities-Natural Gas	3,385	4,405	7,000	4,500	7,000
242 Utilities-Electricity	9,728	10,411	12,000	11,000	12,000
243 Utilities-Telephone	9,745	9,658	12,000	10,000	12,000
254 Repairs & Mte-Vehicles	4,856	6,053	10,000	11,500	10,500
255 Repairs & Mte-Building	1,838	6,208	8,000	7,250	8,250
257 Repairs & Mte-Other Equip	4,774	4,898	5,000	4,900	5,250
265 Rental/Other	13,066	13,254	15,000	14,000	15,500
270 CPR Instruction	6,407	6,344	8,000	12,000	12,500
275 Volunteer/PR Services	484	-	500	-	500
278 Postage	11,061	7,146	13,000	7,500	11,000
280 Travel & Mileage Expense	8,043	6,627	8,500	10,000	8,500
281 CPR Mileage Reimbursement	-	-	-	-	2,000
289 Administrative Services	30,000	32,000	35,000	35,000	35,000
290 Other Contractual Services	49,144	52,494	57,500	55,000	45,000
291 Subscription Services	24,396	17,533	25,000	20,000	22,000
Total Contractual Services	\$ 237,135	\$ 258,993	\$ 284,000	\$ 279,558	\$ 296,500
Commodities					
301 Expendable Office Supplies	\$ 7,764	\$ 5,200	\$ 10,000	\$ 5,500	\$ 10,000
304 Publicity Materials	2,080	3,513	5,000	4,000	5,500
307 Ambulance Vehicle Equip	8,481	2,938	17,000	2,500	8,500
308 CPR Program Supplies	10,489	6,747	15,000	20,000	20,000
314 Medical Supplies	10,151	9,426	15,000	10,500	15,000
328 Maintenance Supplies	2,312	2,130	5,000	2,200	4,000
340 Vehicular Parts and Supplies	11,240	15,018	20,000	20,000	20,000
341 Fuels and Lubricants	30,874	32,772	35,000	43,250	47,000
351 Uniforms	15,115	14,262	20,000	15,000	20,000
390 Other Supplies	8,085	8,609	10,000	9,000	10,000
Total Commodities	\$ 106,592	\$ 100,615	\$ 152,000	\$ 131,950	\$ 160,000

OPERATIONS

TRI-COMMUNITY SOUTH EMS FUND
EMERGENCY MEDICAL SERVICE



PROGRAM EXPENDITURES (Continued)

	<u>2006 Actual</u>	<u>2007 Actual</u>	<u>2008 Budget</u>	<u>2008 Estimate</u>	<u>2009 Budget</u>
Debt Service Payments					
531 Capital Note Payments	\$ 137,746	\$ 137,746	\$ 137,746	\$ 137,746	\$ 137,746
Total Debt Service Payments	<u>\$ 137,746</u>	<u>\$ 137,746</u>	<u>\$ 137,746</u>	<u>\$ 137,746</u>	<u>\$ 137,746</u>
Capital Equipment Transfer					
903 Transfer to Capital Reserve	\$ 371,419	\$ 228,136	\$ 73,819	\$ 15,085	\$ 38,993
Total Capital Equipment	<u>\$ 371,419</u>	<u>\$ 228,136</u>	<u>\$ 73,819</u>	<u>\$ 15,085</u>	<u>\$ 38,993</u>
Total Appropriations	<u>\$ 2,781,934</u>	<u>\$ 2,724,068</u>	<u>\$ 2,833,000</u>	<u>\$ 2,666,889</u>	<u>\$ 2,852,000</u>

BUDGETARY COMMENT

The 2009 Budget is \$19,000 or .67% more than the 2008 budget. The increase is due mainly to an increase in contractual services for 2009.

SUPPLEMENTARY INFORMATION

Tri-Community South EMS Vehicles

	Vin Number	Year	Make	Model	Mileage (as of 12-1- 2008)	Age in Years	Condition	Anticipated Replacement Year
1	3GNGK26G63G156768	2003	Chevy	Suburban	20,333	6	Fair to Poor	TBD per Adm Committee
2	1FDXE45P16HA77138	2006	Ford	AMB-E-450	53,995	3	Fair to Poor	TBD per Adm Committee
3	1FDXE45PX6HA77140	2006	Ford	AMB-E-452	52,883	3	Fair to Poor	TBD per Adm Committee
4	1FDXE45P16HA77141	2006	Ford	AMB-E-450	53,967	3	Fair to Poor	TBD per Adm Committee
5	1FDXE45P36HA77142	2006	Ford	AMB-E-451	52,883	3	Fair to Poor	TBD per Adm Committee
6	1FDXE45P56HA77143	2006	Ford	AMB-E-453	53,384	3	Fair to Poor	TBD per Adm Committee
7	1FDXE45P76HA77144	2006	Ford	AMB-E-451	53,863	3	Fair to Poor	TBD per Adm Committee
8	3GNGK26K17G274897	2007	Chevy	Suburban	9,901	2	Excellent	2012 or later

** There are three (3) ambulances scheduled for replacement in 2009. The three ambulances will be chosen at a later date in 2009.*